

CATALOGUE

OF

TASMANIAN CONTRIBUTIONS

TO THE

INTERNATIONAL EXHIBITION OF SYDNEY,

1879.



Tasmania:

JAMES BARNARD, GOVERNMENT PRINTER, HOBART TOWN.

1879.

CATALOGUE

OF

TASMANIAN CONTRIBUTIONS

TO THE

INTERNATIONAL EXHIBITION OF SYDNEY,

1879.



Tasmania:

JAMES BARNARD, GOVERNMENT PRINTER, HOBART TOWN.

1879.

CATALOGUE

OF

TASMANIAN CONTRIBUTIONS

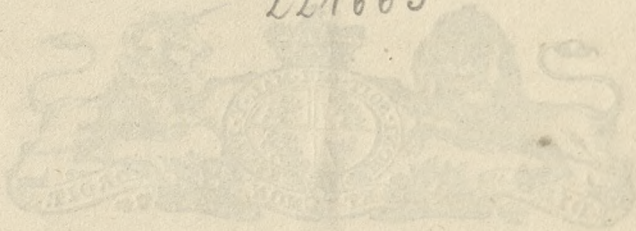
TO THE

INTERNATIONAL EXHIBITION OF SYDNEY

1878



221663



Printed by

JAMES BARNARD, GOVERNMENT PRINTER, HOBART TOWN.

1878

COMMISSIONERS FOR TASMANIA.

Commissioners.

- WILLIAM HENRY BURGESS, Esquire, *Mayor of Hobart Town.*
WILLIAM TURNER, Esquire, *Mayor of Launceston.*
The Honorable SIR JAMES MILNE WILSON, *Knight Commander of the Most Distinguished Order of Saint Michael and Saint George, President of the Legislative Council.*
The Honorable JAMES WILSON AGNEW, M.D., *Member of the Legislative Council.*
JOHN ELLIOT ADDISON, Esquire.
WILLIAM AIKENHEAD, Esquire.
AUDLEY COOTE, Esquire, *Member of the House of Assembly.*
GEORGE CRISP, Esquire.
ADYE DOUGLAS, Esquire, *Member of the House of Assembly.*
CHARLES DOWDELL, Esquire.
HENRY EDGELL, Esquire.
WILLIAM PATRICK GREEN, Esquire.
WILLIAM ALGERNON GUESDON, Esquire.
ALFRED HARRAP, Esquire.
WILLIAM HARTNOLL, Junior, Esquire.
THOMAS COOK JUST, Esquire, *Member of the House of Assembly.*
HENRY ELMES LETTE, Esquire, *Member of the House of Assembly.*
JAMES MACFARLANE, Esquire.
ALEXANDER M'GREGOR, Esquire.
JOHN PERKINS, Esquire.
WILLIAM RITCHIE, Esquire.
ROBERT JAMES SADLER, Esquire.
JAMES SCOTT, Esquire, *Member of the House of Assembly.*
The Honorable GEORGE GILMORE.

Chairman.

The Honorable SIR JAMES WILSON, K.C.M.G. (*elected 18 March, 1879*).

Chairman of Launceston Branch.

WILLIAM TURNER, Esquire, *Mayor of Launceston.*

Secretary.

HUGH MUNRO HULL, Esquire (*elected 18 March, 1879*).

Secretary of Launceston Branch.

C. W. ROCHER, Esquire.

Executive Commissioner for Tasmania.

The Honorable P. A. JENNINGS, C.M.G.

Honorary Representative Commissioners.

W. H. BURGESS, Esquire (*elected 9 September, 1879*).

W. P. GREEN, Esquire (*elected 9 September, 1879*).



CATALOGUE
OF
TASMANIAN CONTRIBUTIONS
TO THE
INTERNATIONAL EXHIBITION OF SYDNEY,
1879.

DEPARTMENT I.—MINING, METALLURGY, & THEIR PRODUCTS.

GROUP.—*Mineral Ores, Building Stones, and Mining Products.*

1. COMMISSIONERS FOR TASMANIA. A Cabinet containing Minerals known to exist in the Island, with Assays and Analyses. (*See Map.*)
2. COMMISSIONERS, Launceston. Tasmanian Alluvial Gold.
3. WILLIAM AIKENHEAD, Tasmanian Copper Company, Launceston. A block of Copper Ore from the outcrop at Badger Head, near Port Sorell.
4. EDWARD HAWSON, Hobart Town. A block of Tin Ore from Mount Heemskirk.
5. FREDERICK THORPE, Montagu Company. A block of Tin Ore from 25 feet below surface, at Mount Heemskirk.
6. HOBART TOWN TIN SMELTING COMPANY. A Trophy of Tin smelted at their Works, containing Six tons of smelted Tin. Designed by R. Harry, Engineer.
7. ARTHUR F. B. HULL, Hobart Town. Beryls from Flinders Island; Zircons from Tin Mines; Topazes and Amethysts from Lake Sorell.
8. DAGOBERT LEWALD, Government Analyst. A jar of Zircons from the Tin Mines. *See Mineral Cabinet.* No. 36.
9. AUSTRALIAN SLATE CO., HENRY EDGELL, Agent. Roofing Slate from Back Creek.
10. CHARLES A. GLOVER, Franklin. Two Hone Stones from the Huon River.
11. HONORABLE JAMES LORD, Hobart Ville. A block of Anthracite Coal from York Plains.
12. JOSEPH RISBY, M.H.A. A block of Anthracite Coal from Bruni Island.
13. THOMAS RANSOM, Killymoon. A block of Bituminous Coal from Mount Nicholas.
14. FREDERICK SPENCER, Hobart Town. A block of Anthracite Coal from Jerusalem.
15. FER. W. KAYSER, Waratah. A collection of Mineral and Rock Specimens, with a printed catalogue thereof. *See Appendix B.*
16. THOMAS STEPHENS, F.G.S., Holbrook-place. A collection of Geological Specimens. *See Appendix C.*
17. RIPPON SHIELD, Hobart Town. 1. Freestone from Tea Tree Quarry; 2. Freestone from Lindisfern; 3. Freestone from Tea Tree; 4. Freestone from Knocklofty; 5. Freestone from Knocklofty, built up into a Trophy.
18. RIPPON SHIELD, Hobart Town. A Lion's head carved in white Freestone.

19. WILLIAM A. KERMODE, Mona Vale. Freestone from Quarry at Mona Vale.

20. F. J. HORTIN, Hobart Town. Zircons, Sapphires, Emerald, and Topazes, from Thomas's Plains.

272. COMMISSIONERS. Gold in quartz from various localities, exhibited by His Excellency

the Governor, Mr. Bernard Shaw, Mr. Lewald, and the Hon. C. O'Reilly.

273. DALLY BROTHERS, Launceston. Limestone and Marble from Beaconsfield.

295. R. GOULD, Longford. Granite from N. E. Coast, polished on one side.

296. G. LAWSON, Longford. Petrified wood.

GROUP.—*Mine Engineering, Models, Maps, and Sections.*

21. DAGOBERT LEWALD, Government Analyst. A Mineralogical Map of the Island, showing localities where Minerals exhibited in the Cabinet are obtained.

DEPARTMENT II.—MANUFACTURES.

GROUP.—*Chemicals.*

22. WESTCOTT, BEEDHAM, & Co., Collins-street. 1. Tar from Stringy Bark Gum Tree; 2. Tar from Gum Trees; 3. Crude Vinegar from same; 4. Acetate of Lime from same.

23. WILLIAM MURRAY, Glenorchy. Soap.

24. JAMES G. MOIR, Queenborough Glens. Shot of various sizes.

GROUP.—*Furniture and Objects of general use in Construction and in Dwellings.*

25. MRS. CHARLOTTE ABBOTT, Sandy Bay. A Table-top of Huon pine, painted in oils, Tasmanian flowers.

26. MISS MAUD ABBOTT, Sandy Bay. A Table-top painted on black in water colours, Tasmanian flowers.

27. MISS ROSE BRENT, Roseneath. A Chess Table, with squares painted in Indian ink, of scenery.

28. JOHN BURDON, junior, Hobart Town. A Table-top painted on black in oils, Tasmanian flowers and berries.

29. MISS EMILY DICKSON, Holbrook-place. A Table-top of Huon pine, painted in water colours, with Tasmanian flowers, birds, and birds' nests.

30. MRS. V. HOOKEY, Davey-street. A Table-top of Huon pine, in water colours, Parrots.

31. MRS. V. HOOKEY, Davey-street. A Table-top of Huon pine, in water colours, Diamond birds.

32. MISS MARGARET HOPE, Elboden-place. A Table-top of Huon pine, with wreath of Tasmanian flowers in water colours.

33. MISS MARGARET HOPE, Elboden-place. A Table-top of Huon pine, with broken wreath of Tasmanian flowers and berries in water colours.

34. MISS MARIE ANTOINETTE HULL, Macquarie-street. A Table-top of Huon pine, with broken wreath of Tasmanian flowers and berries in water colours.

35. MISS NELLIE KING, Macquarie-street. A Table-top of Huon pine, with wreath of Tasmanian flowers in water colours.

36. MASTER C. R. MADDOCK, Elizabeth-street. Picture frame of cone work.

37. MISS M. PIGUENT, Risdon. A Table of Huon pine, with Tasmanian flowers and berries painted in oils.

38. MISS ANN SCOTT, Leith. Spattering work of ferns.

39. MISS WATERHOUSE, New Town. A Table-top of ferns in spattering.

40. MISS WEAVER, Elizabeth-street. A Table-top of Huon pine, with Tasmanian birds in water colours.

41. MISS WEAVER, Elizabeth-street. A Table-top of Huon pine, with flowers and birds in water colours.

42. ALEXANDER WEBSTER, Launceston. A Hip Bath.

43. ALEXANDER WEBSTER, Launceston. A Plunge Bath.

277. MISS MAUD ABBOTT, Sandy Bay. A Table top, with wreath of flowers.

278. MISS MAUD ABBOTT, Sandy Bay. A Table top, in black, with flowers.

279. MISS DOWDELL, Elizabeth-street. A Table top.

280. D. LEITCH, Launceston. A Fernery.

GROUP.—*Woven and Felted Goods of Wool and Mixtures of Wool.*

- | | |
|---|---|
| 44. HERBERT SHERWIN, Liverpool-street, (aged 14). A Cushion in Berlin wool. | 315. BULMAN, JOHNSTON, & Co., Waverley Mills, Launceston. 1 pair Blankets, 1st quality; 1 pair Blankets, extra; 12 Shawls; 84 Pattern Tweeds. |
| 45. HERBERT SHERWIN, Liverpool-street, (aged 14). A piece of Woolwork. | |

GROUP.—*Clothing, Jewellery, and Ornaments, and Travelling Equipments.*

- | | |
|--|---|
| 46. JOSEPH BIDENCOPE, Murray-street. A Dress Vest, in black cloth. | 49. ALEXANDER WEBSTER, Launceston. A Scarborough Trunk. |
| 47. GLEDHILL, WALKER, & Co., Glenorchy. 36 Felt Hats. | 50. ALEXANDER WEBSTER, Launceston. A Travelling Trunk, No. 1. |
| 48. ALEXANDER WEBSTER, Launceston. A Gothic Trunk. | |

GROUP.—*Hardware, Edge Tools, Cutlery, and Metallic Products.*

- | | |
|---|---|
| 51. JOSEPH HYATT & SON, Bathurst-street. Brass Cupboard and Desk Locks; made by himself, and by his son 14 years old. | 284. DAVID THOMAS, Perth. An instrument for shoeing Horses. |
| | 285. DAVID THOMAS, Perth. An instrument for marking Sheep. |

GROUP.—*Carriages, Vehicles, and Accessories.*

- | | |
|---|---|
| 52. JOSEPH OMANT, Elizabeth-st. 1. Sledge Rug of Black Opossum tails; 2. Carriage Rug of Native Cat skins; 3. Carriage Rug of Black | Opossum skins; 4. Hearth Rug of Opossum tails; 5. Circle Hearth Rug of Opossum tails; 6. Carriage Foot Muff of Black Opossum skins. |
|---|---|

DEPARTMENT III.—EDUCATION AND SCIENCE.

GROUP.—*Statistics.*

- | | |
|--|--|
| 53. E. C. NOWELL, Government Statistician. A Volume of Tasmanian Statistics for 1877. | 55. HUGH M. HULL, Clerk of the House. Journals of the House of Assembly for 1878. |
| 54. E. C. NOWELL, Clerk of the Councils. Journals of the Legislative Council for 1878. | 286. WALCH BROTHERS & BIRCHALL, Launceston. Language of Flowers of Australia, compiled by Mrs. Montagu Williams, Westbury. |

DEPARTMENT IV.—ART.

- | | |
|--|---|
| 56. H. H. BAILY, Hobart Town. An Oil Painting of Truganini, the last Tasmanian Female Aborigine. | 62. GEORGE DINHAM, Hobart Town. Summer Afternoon, in oils. |
| 57. MISS CLEBURNE, Risdon. Corra Lynn, near Launceston, in water colours. | 63. A. DOUGLAS, M.H.A., Launceston. South Esk River and Ben Lomond, by Pigenit, in oils. |
| 58. MISS CLEBURNE, Risdon. On the River Jordan, Tasmania, in water colours. | 64. FRANK DUNNETT, Glen House. Mount Wellington, in water colours. |
| 59. MISS CLEBURNE, Risdon. View from foot of Mount Direction across the River Derwent, in water colours. | 65. FRANK DUNNETT, Glen House. Glen House, in water colours. |
| 60. GEORGE DINHAM, Hobart Town. Trees near Mount Wellington, in water colours. | 66. FRANK DUNNETT, Glen House. New Town Church and Asylum, in water colours. |
| 61. GEORGE DINHAM, Hobart Town. Mount Wellington, in water colours. | 67. FRANK DUNNETT, Glen House. Mount Wellington, from Sandy Bay, in water colours. |
| | 68. THOMAS GIBLIN, Fernleigh. Miniature Portraits of Governor Macquarie and Mrs. Macquarie. |

69. MRS. V. W. HOOKEY, Davey-st. Flowers painted on velvet.

70. HERBERT JONES, Davey-st. Aborigines of Tasmania, in oils.

71. MECHANICS' INSTITUTE, LAUNCESTON. Aborigines of Tasmania, in oils, by Dowling.

72. MRS. E. PERCY, Rokeby. Rokeby Village, in water colors.

73. W. C. PIGUENIT, Risdon. South East Bastion of Ben Lomond, from the Marshes, 3000 feet above the sea, in oils.

74. W. C. PIGUENIT, Risdon. Blue Mountains in New South Wales, in oils.

75. W. C. PIGUENIT, Risdon. New Town and Glenorchy Valley, from the Domain, in oils.

76. W. C. PIGUENIT, Risdon. Huon River and *Picnic Hotel*, in oils.

77. HENRY E. SMITH, Hobart Town. Maria Island, in water colours, by Prout Hill.

78. HENRY E. SMITH, Hobart Town. Schouten Island, in water colours, by Prout Hill.

79. MRS. WILSHIRE, Brisbane-street. A Portrait in water colour, of Mathinna, the Aboriginal Girl—a *Protégée* of Lady Franklin.

80. JOHN MOORE, Latrobe. Port Frederick, from Torquay.

81. MRS. J. W. GRAVES, Caldew. Tasmanian Flowers, in oils.

82. JOHN MOORE, Latrobe. River Forth, from the Beach.

GROUP.—*Fish Culture and Apparatus.*

83. COMMISSIONERS FOR TASMANIA. Salmon netted in the Derwent River at Sandy Bay.

84. COMMISSIONERS FOR TASMANIA. A Brown Trout, caught in the Plenty at New Norfolk, 15 lbs. weight.

85. CHARLES KENT, Launceston. A Brown Trout, 11 lbs. weight, caught in the Meander at Deloraine.

86. DANIEL WHITEHOUSE, Hobart Town. A number of very large Oyster Shells from Eagle Hawk Neck.

87. C. ATKINS, Hobart Town. A Grab-all Net made of thread.

GROUP.—*Arboriculture and Forest Products.*

88. CHARLES A. GLOVER, Franklin. Veneers of the following Tasmanian Woods, polished:—

- | | |
|----------------------|------------------|
| 1. Huon Pine. | 6. Dog Wood. |
| 2. Musk | 7. Bottle Brush. |
| 3. Waratah. | 8. Hickory. |
| 4. Horizontal Scrub. | 9. Myrtle. |
| 5. Pink Wood. | 10. Westringia. |

89. CHARLES A. GLOVER, Franklin. Six Paper Knives of Tasmanian Woods.

90. ROYAL SOCIETY OF TASMANIA. Veneers of the following Tasmanian Woods, Polished:—

- | | |
|------------------------|------------------------------------|
| 1. Gum, Plain. | <i>Eucalyptus</i> sp. |
| 2. Gum, Figured. | <i>Eucalyptus</i> sp. |
| 3. Native Cherry. | <i>Exocarpus cupressiformis</i> . |
| 4. Native Laurel. | <i>Anopiteris glandulosa</i> . |
| 5. Celery-topped Pine. | <i>Phyllocladus rhomboidalis</i> . |
| 6. Stringy Bark. | <i>Eucalyptus obliqua</i> . |
| 7. Prickly Wattle. | <i>Acacia diffusa</i> . |
| 8. Silver Wattle. | <i>Acacia dealbata</i> . |

- | | |
|-------------------------|---------------------------------|
| 9. Musk, Plain. | <i>Eurybia argophylla</i> . |
| 10. Musk, Figured. | <i>Eurybia argophylla</i> . |
| 11. Myrtle, Plain. | <i>Fagus Cunninghamii</i> . |
| 12. Myrtle, Figured. | <i>Fagus Cunninghamii</i> . |
| 13. Blackwood, Plain. | <i>Acacia melanoxylon</i> . |
| 14. Blackwood, Root of. | <i>Acacia melanoxylon</i> . |
| 15. Sassafras. | <i>Atherosperma moschata</i> . |
| 16. Honeysuckle. | <i>Banksia Australis</i> . |
| 17. He Oak. | <i>Casuarina suberosa</i> . |
| 18. She Oak. | <i>Casuarina quadrivalvis</i> . |
| 19. Tea Tree. | <i>Leptospermum</i> . |
| 20. Iron Wood. | <i>Notelea ligustrina</i> . |
| 21. Native Pear. | <i>Hakea lisosperma</i> . |
| 22. Dog Wood. | <i>Bedfordia salicina</i> . |
| 23. Native Box. | <i>Bursaria spinosa</i> . |
| 24. Peppermint. | <i>Eucalyptus amygdalina</i> . |
| 25. Pink Wood. | <i>Croton</i> sp. |
| 26. White Wood. | <i>Pittosporum bicolor</i> . |
| 27. Pepper Tree. | <i>Tasmannia aromatica</i> . |

91. THOMAS STEPHENS, Holbrook Place. Specimens of the following Tasmanian Woods, polished :—

1. Iron Bark.
 2. Scented Wood.
 3. Pencil Cedar.
 4. King William Pine.
92. J. HENRY & Co., Don. Piece of Pieman River Pine, 6 feet by 10 inches.
93. J. HENRY & Co., Don. Piece of Blackwood, 6 feet by 10 inches.
94. JOHN WATSON, Hobart Town. A block of Blue Gum Wood.
95. GRUBB BROTHERS, Hobart Town. Wattle Bark for Tanning purposes, in three stages of preparation.
96. MRS. JOHN MITCHELL, Lisdillon. Gum of the Oyster Bay Pine. (*Frenella*.)

290. COMMISSIONERS, Launceston. Box of Colonial Woods, cut small.

311. A. M. REID, Leven. Woods of Tasmania, as follows :—Blackwood, Musk, Myrtle, Stringy Bark, White Gum.
312. A. M. REID, Leven. Two large slabs of Blackwood and Myrtle.
313. PETER MILLS, Launceston. Blackwood prepared for the panels of a Bank counter.
316. THOMAS OATES, Huon. A Railway Sleeper of Blue Gum Wood.
317. JOSEPH GRAVES, Southport. A Railway Sleeper of Stringy Bark Wood.

DEPARTMENT VI.—AGRICULTURE.

GROUP.—*Animal Products, Land and Marine, used as Food.*

97. O. H. HEDBERG, Argyle-street.—Cheese made by R. Cadman, St. Mary's.
98. JOHN WOODBERRY, Deloraine. Cheese.
310. JOHN JOYCE, Launceston. Twelve Hams ; eight sides of Bacon.

GROUP.—*Animal Products, Land and Marine, used as Materials.*

99. SIMON ARNETT, Bothwell. Skins of Fur Animals, as follows :—
1. Black Opossum, 24 skins.
 2. Grey Opossum, 36 ditto.
 3. Kangaroo, 12 ditto.
 4. Wallaby, 12 ditto.
 5. Wombat, 6 ditto.
 6. Tiger, 3 ditto.
 7. Devil, 3 ditto.
 8. Ringtailed Opossum, 12 ditto.
 9. Platypus, 10 ditto.
 10. Musk Rat, 2 ditto.
 11. Black and White Native Cat, 6 ditto.
 12. Rock Opossum, 9 ditto.
 13. Forest Rat, 12 ditto.
 14. Kangaroo Rat, 12 ditto.
 15. Tiger Cat, 12 ditto.
 16. Native Cat, 12 ditto.
100. SIMON ARNETT, Bothwell. Leather, as follows :—
1. Calf Skins, 3.
 2. Hide Kip, 1.
 3. Kangaroo, 24.
 4. Cats and Opossum, 2.
101. T. L. BUTTON, Leven. Leather, as follows :—
1. Kangaroo Skin, 12.
 2. Imitation Kid, 12.
102. JOSEPH OMANT, Elizabeth-street. Furs, as follows :—
1. Jacket of Silver-grey Opossum.
 2. Ladies' Jacket of Ringtail Opossum.
 3. Coat of Kangaroo Skin.
 4. Albatross Breast.
103. S. BURROWES, Risdon. Furs and Skins, as follows :—
1. Black Opossum Rug.
 2. Grey Opossum Rug.
 3. Grey set of Furs.
 4. Ladies' Opossum Jacket.
 5. Two Black sets of Furs.
 6. Penguin set of Furs.
 7. Rock Opossum Skin.
 8. Grey Opossum Skin.
 9. Foot Muff.
104. T. D. MARTIN, Collins-street. Furs.
105. WILLIAM MURRAY, Glenorchy. Tallow Candles, White Wick.
106. WILLIAM MURRAY, Glenorchy. Tallow Candles, Blue Wick.
107. ALEXANDER M'GREGOR, Battery Point. Whale Oils and Spermaceti.

DEPARTMENT V.—MACHINERY.

GROUP.—*Water Transportation.*

108. L. MACQUARIE, Hobart Town. A Whale Boat of Huon pine, with Oars complete.

GROUP.—*Engraving and Lithography.*

- | | |
|---|---|
| 109. MISS ELLEN BURGESS, Hobart Town. Crayon drawing, Rosalind. | 112. MISS FANNY MADDOCK, Elizabeth-street. Crayon drawing, Cutting up the Deer. |
| 110. CHARLES DOUGHTY, Hobart Town. Pencil drawing, Miss E. Rayne. | 113. B. T. SOLLY, Hobart Town. Crayon drawing, Cape Pillar. |
| 111. CHARLES DOUGHTY, Hobart Town. Pencil drawing, Clytie. | 114. B. T. SOLLY, Hobart Town. Crayon drawing, The Lover's Leap, Lisdillon. |

GROUP.—*Photographs.*

- | | |
|--|--|
| 115. COMMISSIONERS FOR TASMANIA. Photographs of Tasmanian Scenery and Public Buildings, by the following artists :—
1. Morton Allport.
2. J. Anson.
3. H. H. Baily.
4. S. Clifford.
5. A. Winter.
6. C. Woolley. | 119. THE HONORABLE SIR JAMES WILSON, K.C.M.G. A photographic portrait by Winter of Mr. Weld, C.M.G., Governor. |
| 116. F. PATERSON, Hobart Town. Twelve Stereoscopic Pictures of Scenery, by dry process. | 120. HUGH M. HULL, Secretary. Frame of photographic portraits of Six Governors of Tasmania. |
| 117. HUGH M. HULL, Macquarie-street. Photographic portraits of the last Tasmanian Male and Female Aborigines, in two frames. | 121. J. ANSON & BROTHERS. Plate of photographs of Tasmanian Scenery. |
| 118. WHERRITT & Co., Elizabeth-street. Six photographs of Children. | 274. J. ANSON & BROTHERS. Silver Falls, Mount Wellington. |
| | 289. COMMISSIONERS, Launceston. Twenty-five views, in duplicate, of Launceston and its neighbourhood. |
| | 314. W. BURROWES, Launceston. Specimens of Photography. |

GROUP.—*Pomology.*

- | | |
|---|---|
| 122. R. C. READ, Redlands. Box of Keeping Apples from Redlands. | 123. SHOBRIDGE BROTHERS. Box of Keeping Apples from Bushy Park. |
|---|---|

GROUP.—*Agricultural Products.*

- | | |
|---|--|
| 124. WILLIAM BROCK, Green Ponds. Wheat. | 131. GEORGE MARSHALL, junior, Sorell. Wheat. |
| 125. WILLIAM BROCK, Green Ponds. Wheat. | 132. T. and G. PITT, Green Ponds. Wheat (Farmer's Friend). |
| 126. WILLIAM GIBSON, Franklin Wharf. Wheat. | 133. T. and G. PITT, Green Ponds. Wheat (Farmer's Friend). |
| 127. DOSSITER BROTHERS, Old Wharf. Wheat. | 134. T. W. MONDS, Carrick. Wheat (White Tuscan). |
| 128. H. H. PEARCE, Cambridge. Wheat (Goldsmith's Prolific). | 135. MRS. E. PERCY, Rokeby. English Barley. |
| 129. MRS. E. PERCY, Rokeby. Wheat (Fulton's Pedigree). | 136. ROBERT C. JENKINS, Carlton. English Barley. |
| 130. T. W. MONDS, Carrick. Wheat (Braemar Velvet). | |

- | | |
|---|--|
| 137. WM. GRACIE, Gore-street. English Barley. | 293. GEORGE F. THIRKELL, Darlington Park. Oats (Foxtail). |
| 138. ROBERT C. JENKINS, Carlton. Cape Barley. | 294. CALEB J. L. SMITH, Deloraine. Oats (Foxtail). |
| 139. ROBERT C. JENKINS, Carlton. English Vetches. | 299. THOMAS EDGINTON, Launceston. Cocks-foot Grass Seed. |
| 140. ROBERT C. JENKINS, Carlton. Tick Beans. | 300. THOMAS EDGINTON, Launceston. Italian Grass Seed. |
| 141. ROBERT C. JENKINS, Carlton. White Peas. | 301. THOMAS EDGINTON, Launceston. Timothy Grass Seed. |
| 142. GEORGE MARSHALL, junior, Sorell. Peas. | 302. THOMAS EDGINTON, Launceston. Grey Peas. |
| 143. RICHARD HILL, Huon. A bale of Hops. | 303. THOMAS EDGINTON, Launceston. Grey Tares. |
| 144. ROBERT C. READ, Redlands. Two bales Hops. | 304. THOMAS EDGINTON, Launceston. Golden Tares. |
| 145. SHOOBRIDGE BROTHERS, Bushy Park. Two bales Hops. | 305. THOMAS EDGINTON, Launceston. White or Flesh-coloured Tares. |
| 146. S. P. H. WRIGHT, Glenorchy. A bale of Hops. | 306. THOMAS EDGINTON, Launceston. Tick or Horse-beans. |
| 147. WM. GRACIE, Gore-street. A pocket of Hops grown by Mr. Nicholson, New Norfolk. | 307. THOMAS EDGINTON, Launceston. English Barley. |
| 148. SHOOBRIDGE BROTHERS, Bushy Park. A box of Hops. | 308. THOMAS EDGINTON, Launceston. Bale of Derrick-pressed Hay. |
| 292. GEORGE F. THIRKELL, Darlington Park. Wheat (White Crescent). | |

GROUP.—*Vegetable Products used as Food or Materials.*

- | | |
|--|---|
| 149. DOSSITER BROTHERS, Old Wharf. Flour. | 164. JAMES KEEN, Kingston. Curry Powder. |
| 150. MRS. EMMA JANE WALKER, Barrack-street. Flour. | 165. JAMES KEEN, Kingston. Sauces and Ketchup. |
| 151. T. W. MONDS, Carrick. Flour. | 166. C. D. HAYWOOD, Elizabeth-street. Biscuits and Confectionery. |
| 152. WM. GIBSON, Franklin Wharf. Flour. | 167. ROYAL SOCIETY OF TASMANIA. Oil distilled from the Blue Gum Tree in 1875. |
| 153. C. & J. DEGRAVES, Cascades, Pale Malt. | 168. WILLIAM JOSEPH MARSDEN, Collins-street. Preserved Vegetable Marrow. |
| 154. WM. GRACIE, Gore-street. Pale Malt. | 169. G. HICKMAN, Kangaroo Valley. Jams in jars. |
| 155. H. J. JAMES, Elizabeth-street. Malt. | 170. G. HICKMAN, Kangaroo Valley. Jams in tins. |
| 156. MRS. EMMA JANE WALKER, Barrack-street. Malt. | 171. MRS. CLENNETT, Port Esperance. Jams and Jellies. |
| 157. T. W. MONDS, Carrick. Oatmeal. | 172. A. BOYES, Forth. A Bag of Potatoes. |
| 158. R. SCOTT, Leith Mills. Oatmeal. | 173. G. PEACOCK, Old Wharf. Jams and Jellies; ten cases. |
| 159. DAVID RITCHIE, Launceston. Oatmeal, No. 1. | 275. MRS. FLASSMAN, Sandy Bay. Apple Jelly. |
| 160. DAVID RITCHIE, Launceston. Oatmeal, No. 2. | 276. G. ARNOLD, Hobart Town. Biscuits. |
| 161. DAVID RITCHIE, Launceston. Pearl Barley. | |
| 162. DAVID RITCHIE, Launceston. Groats. | |
| 163. DAVID RITCHIE, Launceston. Split Peas. | |

GROUP.—*Fermented and other Drinks.*

174. C. & J. DEGRAVES, Cascades. Ale, Pale, one barrel.
 175. C. & J. DEGRAVES, Cascades. Ale, Bitter, one barrel.
 176. C. & J. DEGRAVES, Cascades. Ale, Mild, one barrel.
 177. C. & J. DEGRAVES, Cascades. Ale, Strong, one barrel.
 178. C. & J. DEGRAVES, Cascades. Ale, Light Pale, one barrel.
 179. WM. GRACIE, Gore-street. Ale, Bitter, one barrel.
 180. WM. GRACIE, Gore-street. Ale, Mild, one barrel.
 181. WM. GRACIE, Gore-street. Ale, Strong, one barrel.
 182. EMMA JANE WALKER, Barrack-street. Ale, Pale, one barrel.
 183. EMMA JANE WALKER, Barrack-street. Ale, Mild, one barrel.
 184. EMMA JANE WALKER, Barrack-street. Porter, one barrel.
 185. JAMES C. MITCHELL, Victoria-street. Ale, Mild, Cascades, one dozen bottles.
 186. JAMES C. MITCHELL, Victoria-street, Ale, Strong, Cascades, one dozen bottles.
 187. THOMAS MARSDEN, Collins-street. Ale, one dozen.
 188. EDWARD CHANCELLOR, Elizabeth-street. Ale, two cases of, one dozen each.
 189. ELIZABETH NOAKE, Longford. Ale, three dozen bottles.
 190. H. J. JAMES, Elizabeth-street. Ale, one barrel.
191. H. J. JAMES, Elizabeth-street. Ale, one barrel.
 192. H. J. JAMES, Elizabeth-street. Ale, one dozen bottles.
 193. H. J. JAMES, Elizabeth-street. Porter, one barrel.
 194. THOMAS MARSDEN, Collins-street :—
 1. Sodawater.
 2. Lemonade.
 3. Ginger Ale.
 4. Sarsaparilla.
 5. Raspberry Nectar.
 6. Peppermint.
 7. White Lemon Syrup.
 8. Dark Lemon Syrup.
 9. Cloves.
 10. Ginger Wine.
 11. Ginger Brandy.
 12. Raspberry Vinegar.
 195. W. G. WEAVER, Elizabeth-street. Manufactures as follows :—
 1. Orange Bitters.
 2. Quinine Bitters.
 3. Aromatic Bitters.
 4. Ginger Brandy.
 5. Raspberry Cordial.
 6. Peppermint Cordial.
 196. KELLY & GORDON, Brisbane-street. Cordials and Aerated Waters.
 297. GEORGE F. GLENWRIGHT, Launceston. Case of Ale, 4 dozen bottles.

GROUP.—*Machines, Implements, and Processes of Manufacture.*

197. M. ROBINSON, Bothwell. A Writing Desk of musk wood, with secret drawers.

GROUP.—*Agricultural, Engineering, and Administration.*

198. I. E. CHAPMAN, Salamanca Place. Guano from Bird Island.

GROUP.—*Textile Substances of Vegetable or Animal Origin.*

199. J. BIDENCOPE, Hobart Town. Wool.
 200. COX BROTHERS & BELL, Launceston. Wool, extra exhibits.
 201. HERBERT GATENBY, Longford. Wool.
 202. WM. GIBSON & SON, Perth. Wool.
 203. WM. HENRY GIBSON, Fairfield. Wool.
 204. S. H. GRUEBER, Avoca. Wool, in grease, from a merino ram.
 205. ROBERT JONES, Riccarton. Wool from pure merino ewe.
 206. ROBERT JONES, Riccarton. Wool from pure merino ewe.
 207. GEORGE W. KEACH, Chiswick. Wool.
 208. WM. A. KERMODE, Mona Vale. Wool, 6 rams in grease, 6 rams washed, 12 ewes washed,

6 lambs washed; bale washed Wool above 200lbs. weight; case of Wool, washed, sample.

209. HON. JAS. MACLANACHAN, Ballochmyle. Wool.

210. GEORGE PARRAMORE, Ross. Wool.

211. THOMAS PARRAMORE, Beaufront. Wool.

212. G. F. THIRKELL, Darlington Park. Wool.

213. J. D. TOOSEY, junior, Cressy. Wool.

All these Wool Exhibits will appear in detail in the Catalogue of the Wool Court.

GROUP.—*Land Animals.*

214. JAMES GIBSON, Belle Vue. A Merino Ram.

215. JAMES GIBSON, Belle Vue. A Merino Ram.

216. JAMES GIBSON, Belle Vue. A Merino Ram.

217. JAMES GIBSON, Belle Vue. A Merino Ram.

218. JAMES GIBSON, Belle Vue. A Bull.

219. J. TAYLOR, Macquarie River. A Bull.

MISCELLANEOUS.

220. HENRY T. HULL, Macquarie-street. Collection of Tasmanian Birds' Eggs, arranged with names, for Museum purposes. (72 species.)

221. A. BOYES, Forth. Tasmanian Shells,

222. ROYAL SOCIETY OF TASMANIA. Ethnology of Tasmanian Aborigines, as follows:—1. Skulls of Male and Female; 2. Casts of Male and Female Faces; Baskets; Waddies; Stone Implements; and Model of Catamaran.

318. AUDLEY COOTE, M.H.A. Bust, life size, of William Lanney, the last of the Tasmanian Male Aborigines.

309. AIKENHEAD & BUTTON, Launceston. Specimens of Tasmanian Industry and Manufactures in Bookbinding, Paper Ruling, and Newspaper.

320. MISS BROMBY, Hobart Town. Cabinet for curious China, &c., with *curios* in China.

Tasmanian Contributions to "The Women's Court."

223. MRS. HOOKEY, Davey-street. Cushion of Velvet, with Flowers.

224. MRS. ALLISON, Patrick-street. Lace Work.

225. MISS H. BEEDHAM, Collins-street. Point Lace Work.

226. MISS BOOTH, Patrick-street. Picture-frame of Cone Work.

227. MRS. BURGESS, Kelly-street. Flowers in Worsted Work.

228. MRS. BYRNE, Emu Bay. Lace Work.

229. MISS CROW, Goulburn-street. Lace Handkerchief.

230. MISSES CROW, Goulburn-street. Picture-frame of Cone Work.

231. MISSES CROW, Goulburn-street. Picture-frame of Cone and Fern Work.

232. MRS. ELLIOTT, Barrack-street. A frame illustrating the Agricultural Produce of Tasmania.

233. MRS. ELLIOTT, Barrack-street. Card Basket of Ferns and Cones, silvered and gilt.

234. MRS. ELLIOTT, Barrack-street. A Picture-frame in Cone Work.

235. MISSES FARRER, Plassy. Knitted Counterpane.

236. MRS. HARRISON, Collins-street. A Knitted Counterpane in Berlin Wool.

238. MRS. HOOKEY, Davey-street. Frame of Tasmanian Flowers in Worsted Work.

239. MISS HUXTABLE, Washington-street. Honiton Pillow Lace Work.

240. MRS. KOEPPEN, Murray-street. Hair Work.

241. MRS. KOEPPEN, Murray-street. Cork Work.

242. MRS. KOEPPEN, Murray-street. Lace Work on Handkerchief.

243. MISS ROSINA MADDOCK, Elizabeth-street, Maltse Lace Work.

244. MISS ROSINA MADDOCK, Elizabeth-street. Pillow Lace, with bobbins, &c.

245. MISS E. MATHER, Liverpool-street. Flowers and Berries.

246. MISS PENNY, Warwick-street. Coloured Cloth Flowers in frame.

246. MISS PENNY, Warwick-street. Coloured Flowers in cloth, in case.
247. MRS. PERCY, Rokeby. A Knitted Counterpane.
248. MRS. PERCY, Rokeby. A Netted and Worked Counterpane.
249. MISS FIGUENIT, Risdon-road. Lace Handkerchief, Tasmanian Clematis.
250. MISS PRICE, Launceston. Wreath of Flowers and Foliage.
251. MRS. ADA PROPSTING, Patrick-street. Lace Work.
252. MRS. ADA PROPSTING, Patrick-street. A Crochet Antimacassar.
253. MRS. W. THORNTON, Liverpool-street. Blue Gum Leaves and Flowers in Berlin wool.
254. MRS. WALPOLE, Franklin. A Knitted Counterpane.
255. MRS. WALPOLE, Franklin. A Netted and Darned Counterpane.
256. MRS. WALPOLE, Franklin. Head-piece to Counterpane.
257. MISS WOODIN, Patrick-street. Antimacassar, Netted and Darned.
258. MISS WOODIN, Patrick-street. Ferns in a Cone Frame.
259. MISS FIGUENIT, Risdon. Tasmanian Flowers in a Vase, in oils.
260. MISS DAWSON, Clarence Plains. Picture-frames of Leather Work.
281. MRS. MORRIS, Hobart Town. A Seaweed Basket.
287. WALCH BROTHERS & BIRCHALL, Launceston. Portfolio of Tasmanian Ferns and Flowers, by Mrs. M. Williams, Westbury.
288. WALCH BROTHERS & BIRCHALL, Launceston. Framed collection of Tasmanian Ferns, mounted by Mrs. Montagu Williams, Westbury.
298. MISS SHERWIN, Launceston. Indian Ink Sketches of four Ladies.
291. MISS F. RYAN, Launceston. Pack of Cards, Painted.
282. C. H. SHEARER, Launceston. A Counterpane.
283. C. H. SHEARER, Launceston. Two Antimacassars.
319. MISS PIESSE, Hobart Town. A Cone Work Picture-frame.

CONTRIBUTIONS TO THE FINE ARTS DEPARTMENT.

261. GEORGE DINHAM, Hobart Town. An Anchor, in oils.
262. GEORGE DINHAM, Hobart Town. Fowls, by Hondegooter, in oils.
263. PETER OLDHAM, Hobart Town. Cows, by J. Cooper, in oil.
264. PETER OLDHAM, Hobart Town. The Milk Maid.; exhibited in 1825 at the Royal Academy.
265. PETER OLDHAM, Hobart Town. The Flower Seller; exhibited in 1825 at the Royal Academy.
266. PETER OLDHAM, Hobart Town. Battle Field, in oils, by Wouvermann.
267. MRS. E. PERCY, Rokeby. Italy, by Turner, copied in oils.
268. MRS. E. PERCY, Rokeby. Bridge in Wales, in oil.
269. MRS. E. PERCY, Rokeby. John Anderson my Jo, in oils.
270. MISS SOLLY, Hobart Town. Neath Castle, in water colour.
271. E. A. WALPOLE, Franklin. Head of a Monk, in oils.

CATALOGUE OF MINERALS

(In Cabinet. Arranged by Messrs. DAGOBERT LEWALD and ALFRED J. TAYLOR.)

EXHIBITED BY

SOUTHERN COMMISSIONERS, TASMANIA.

SYDNEY EXHIBITION, 1879.

NOTE.

THE accompanying Cabinet of MINERALS is exhibited by the Southern Commissioners.

With the exception of specimens lent by the Royal Society of Tasmania, Nos. 76 to 87, and Quartz specimens exhibited by the Northern Commissioners, Nos. 54 to 75A and a few others, assays as made by Mr. D. LEWALD, Government Analyst, are given.

The Minerals are divided into Five Sections, and the numbers in the Catalogue correspond with the numbers on the specimens.

Section I.—TIN ORES. Nos. 1 to 36.

Section II.—COALS. Nos. 37 to 42D.

Section III.—MISCELLANEOUS. (Including Copper and Bismuth.) Nos. 43 to 51.

Section IV.—GOLD SPECIMENS (from Northern Commissioners). Nos. 52 to 75.

Section V.—IRON, LIMESTONES, &c. (lent by Royal Society). Nos. 76 to 88.

The Cabinet itself is made of Huon Pine ornamented with Tasmanian Blackwood and Muskwood.

SECTION I.—TIN ORES.

1. LODE-TIN, from Cumberland Co., West Coast. Assay 41·3 per cent. of metal.

2. STRATAS OF CHLORITE, PORPHYRY, AND TOURMALINE in small lode, Cumberland Co., ditto.

3. CRYSTALLISED TIN ORE AND QUARTZ, ditto, ditto.

4. FINE CRYSTALS OF CASSITERITE IN CHLORITE, ditto, ditto.

5. TIN from lode 12 feet in width, taken from 7 feet below surface, ditto, ditto. Assay the same as No. 1.

6. AMORPHOUS AND CRYSTALLISED TIN ORE from lode, ditto, ditto.

7. NUGGET OF BLACK CRYSTALLISED TIN ORE found in alluvial ground, ditto, ditto. Assay 71·8 of metal.

8. LODE-TIN ORE, from Mount Heemskirk Tin Mining Co., ditto, ditto. Assay 69·7 of metal.

8A. LARGE BLACK CRYSTALS, from Lode of Mount Heemskirk Company.

9. LODE-TIN ORE, from Mount Heemskirk Tin Mining Co., ditto, ditto. Assay 64·2 of metal.

9A. Ditto, large Crystals, from Macquarie Harbour Co., Mount Heemskirk.

10. ROCK ORE from red face Mount Bischoff Co. Assay 69·3 of metal.

11. LODE-TIN from North Bischoff Valley Co. Assay 17·8 of metal.

12. Ditto, from ditto (Reynolds' Section). Assay 23·1 of metal.

13. Ditto, (Thomas's Section). Assay 17·4 of metal.

14. TIN NUGGETS from North Bischoff Valley Co. Assay 61·5 of metal.

14A. LODE-TIN from West Bischoff Co. Assay 52·4 of metal.

14B. Ditto, ditto. Assay 50·8 of metal.

15. FINE CRYSTALLISED BLOCK TIN ORE IN CHLORITE from lode 25 feet below surface, Montagu Co., near Mount Heemskirk. Assay 55.5 of metal.

16. LODE-TIN IN PORPHYRY from Belmont Co., near Mount Cameron, North East Coast. Assay 51.8 of metal.

17. LODE-TIN IMBEDDED IN IRON CLAY from Laffer and Norwegian Co., ditto. Assay 66.5 of metal.

18. LODE-TIN IN IRON CLAY AND PORPHYRY from Marie Louise Co., ditto. Assay 67.3 of metal.

19. LODE-TIN IN GRANITE from claim on Cascade River, Upper Ringarooma. Assay 39.2 of metal.

20. LODE-TIN from North Mount Cameron, (black crystals in decomposed granite). Assay 64.2 of metal.

21. Ditto from "Fly by Night Co.," North Mount Cameron, (black crystals in decomposed granite). Assay 42.1 of metal.

22. STREAM TIN from Weal Tasman Co., Gould's Country. Assay 74.5 of metal.

23. Ditto from Waverley Co., Thomas's Plains. Assay 73.5 of metal.

24. Ditto from Atlas Co., ditto. Assay 74.5 of metal.

25. STREAM TIN from Rising Sun Co., George's Bay. Assay 72.5 of metal.

26. STREAM TIN from Emu Co., George's Bay. Assay 76.4 of metal.

27. Ditto from Little May Co. Assay 75.5 of metal.

28. Ditto from Eve Co., ditto. Assay 74.1 of metal.

29. Ditto from Union Co., ditto. Assay 74. of metal.

30. Ditto containing Zircons from Blue Tier Co., Gould's Country. Assay 73.2 of metal.

31. Ditto from Rocket Co. George's Bay. Assay 75. of metal.

32. Ditto from Laffer and Norwegian Co., near Mount Cameron. Assay 74.2 of metal.

33. Ditto from Rux Co., George's Bay. Assay 72.1 of metal.

34. Ditto (in black crystals) from Waratah Co. Thomas's Plains, East Coast. Assay 75.5 of metal.

35. Ditto in Amorphous Grey Nuggets, from Mount Heemskirk Co. Assay 68.5 of metal.

36. COLLECTION OF ZIRCONS out of Stream Tin collected at East and North East Coast, Mines. (Exhibited by Mr. D. Lewald.)

SECTION II. - COALS.

37. COAL from Sandfly Ranges, near North West Bay, (taken from upper seam.)

Analysis: Fixed Carbon.....	62.2
Volatile matter (bitumen)..	23.3
Mineral matter.....	8.7
Moisture	5.0
Impurities (including sulphur)	.8
	<hr/>
	100.0

38. Ditto, ditto, from middle seam.

Analysis: Fixed Carbon.....	63.5
Volatile matter (bitumen)..	15.7
Mineral matter.....	14.7
Moisture	5.3
Impurities8
	<hr/>
	100.0

39. Ditto, ditto, from lower seam.

Analysis: Fixed Carbon.....	67.0
Volatile matter (bitumen) ..	12.7
Mineral matter.....	14.3
Moisture	5.4
Impurities6
	<hr/>
	100.0

40. COAL from Gardener's Bay Coal Mining Association.

Analysis: Fixed Carbon.....	63.5
Volatile matter (bitumen)..	15.7
Mineral matter.....	17.9
Moisture	2.9
	<hr/>
	100.0

41. Ditto from Enterprise Mine, New Town. (Exhibitor R. P. Brooks, Esq.)

Analysis: Fixed Carbon.....	53.1
Volatile matter (bitumen) ..	13.9
Mineral matter.....	29.3
Moisture ..	3.7
	<hr/>
	100.0

42. Ditto from Adventure Bay, Bruny Island. (Exhibitor J. E. Risby, Esq., M.H.A.)

Analysis: Fixed Carbon.....	69.9
Volatile matter (bitumen) ..	14.2
Mineral matter.....	12.9
Moisture	3.
	<hr/>
	100.0

42A. COAL, Black Diamond, from York Plains.

Analysis: Fixed Carbon.....	58.4
Volatile matter (bitumen) ..	16.4
Mineral matter.....	21.1
Moisture.....	4.1

100.0

42B. COAL from Jerusalem.

Analysis: Fixed Carbon.....	56.8
Volatile matter (bitumen) ..	12.5
Mineral matter.....	27.9
Moisture.....	2.8

100.0

42C. COAL from Green Point, Port Cygnet.

Analysis: Fixed Carbon.....	64.8
Volatile matter.....	19.9
Mineral matter.....	14.1
Moisture.....	1.2

100.0

SECTION III.—MISCELLANEOUS.

43. ASBOLITE (earthy Cobalt and Manganese) imbedded in clayey iron ore, from Port Cygnet, Huon. Contains:—

Oxide of Cobalt.....	12.5 per cent.
Per Oxide of Manganese.....	54.5 per cent.

the rest being oxide of iron, clay, and silica

44. ASBOLITE, from Castle Forbes Bay, Huon, contains:—

Oxide of Cobalt.....	16.7
Per Oxide of Manganese.....	51.3

The rest being Oxide of Iron, Clay, and Silica.

45. BISMUTH ORE in Tourmaline from Mount Ramsay, containing 13.2 of Metallic Bismuth. Exhibitor, A. Butler, Esq.

46. COPPER ORE, from Dalley's Claim, Beaconsfield.

Assay—Pyrites.....	26.0
Corresponding to Copper.....	7.8
Gangue.....	74.0

46A. COPPER ORE from Badger Head. Contains 15.4 per cent. of Metallic Copper.

47. COPPER ORE, showing green and blue carbonate and Red Oxide of Copper, from Mt. Meredith Ranges, N. W. Coast. Contains 7.3 of Metallic Copper.

48. COPPER ORE from Mt. Morris. Contains 2.6 of Metallic Copper.

49. TETRAHEDRITE (?) from West Bischoff Co. Contains:—

Antimony.....	28.3
Zinc.....	5.4

And of Silver 18ozs. 11dwts. per ton. Also, Arsenic, Copper, and Sulphur.

50. ANTIMONY ORE from Mt. Bischoff. Exhibitor, The Hon. J. S. Dodds, M.H.A.

Contains:—

Antimony.....	54.0
Zinc.....	5.4

And 13ozs. 5dwts of Silver to ton. Also, Arsenic, Copper, and Sulphur.

51. TUNGSTEN AND TIN ORE IN QUARTZ. Exhibitor, Mr. H. J. Hull.

SECTION IV.—GOLD.

52. From Quartz Reef, George's Bay:—

Assay—Gold, 1oz. 12dwts. 11grs. per ton.
Silver, 6dwt. 3grs. ditto.

53. From Alpine Co.'s Reef, Fingal:—

Assay—Gold, 6ozs. 11dwts. per ton.

54. From Black Boy, Fingal.

55. From Ben Lomond, ditto.

56. From Circular Head, N Coast.

57. From Denison Diggings.

58. From Waterhouse Reefs.

59. From Waterhouse Reefs.

60. From New Specimen Hill G. M. Co., Nine Mile Springs.

61. From Golden Cross Reef, ditto.

62. From New Chum Reef, ditto.

63. From City of Launceston Co's Reef, ditto.

64. From Native Youth Reef, ditto.

64A. Ditto, ditto.

65. From New Morning Star Co's. Reef, Nine Mile Springs.

- | | |
|---|---|
| <p>66. From Golconda Reef, Nine Mile Springs.
 67. From Florence Nightingale Reef, Beaconsfield.
 67A. From Florence Nightingale Reef, ditto.
 68. From Beaconsfield.
 69. Ditto.
 70A. From Tasmanian Reef, ditto.
 70B. From Tasmanian Reef, Beaconsfield.
 71. From Dalley's United Co's. Reef, ditto.</p> | <p>72. From Golden Gate Co's. Reef, Beaconsfield.
 73. From Little Wonder Reef, ditto.
 74. From Southern Cross Reef, Beaconsfield.
 74A. PYRITICAL QUARTZ, from Mussel Roe River: contains Gold 13 ozs. 1 dwt. to ton.
 74B. Ditto, ditto: contains Gold 4 ozs. 8 dwts. to ton.
 75. SPECIMEN OF TOP CEMENT.
 75A. Ditto, ditto.</p> |
|---|---|

SECTION V.—IRON, &c.

- | | |
|---|--|
| <p>76. NODULAR IRON ORE, from Ilfracombe, West Tamar.
 77. RED HEMATITE, from West Tamar.
 78. CLAY IRON ORE, from East Coast.
 79. NODULAR IRON ORE, from Sorell District.
 80. IRON ORE, from Brunl Island.
 81. MANGANESE IN QUARTZ, from Western Creek.
 82. SILVER AND COPPER ORE, from Penguin Creek.
 82A. GALENA, from Tea Tree Point, near Frenchman's Cap.
 82B. GALENA, from Mount Bischoff.
 83. FOSSILIFEROUS LIME STONE, from near New Norfolk.</p> | <p>84. FOSSILIFEROUS TRAVERTINE (fresh water limestone), from Geilstown Bay, near Risdon. Exhibited by Mr. A. J. Taylor.
 84A. LIMESTONE, carrying Galena, from River Tamar. Exhibited by Mr. Commissioner Shaw.
 84B. ARRAGONITE, (white Marble Limestone,) from West Tamar. Ditto.
 84C. GREY MARBLE, ditto. Ditto.
 85. TASMANIAN MARBLE (polished).
 86. SLATE, from Piper's River.
 87. TASMANITE, bituminous shale from River Mersey, containing 85.3 bitumen.
 88 FIRE CLAY, from Seymour.
 * SAPPHIRES AND ZIRCONS, from E. Coast Tin Mines.</p> |
|---|--|

APPENDIX.

A.

THE Mineralogical Cabinet is intended to show, by specimens exhibited, the Mineral wealth and resources of Tasmania.

The principal features in the Cabinet are the Gold and Tin Specimens. Coal and Iron form prominent groups; and specimens of Bismuth and Cobalt show that the Colony is not destitute of the rarer mineral substances used in Manufactures and Arts.

SECTION I.

Starting from Mount Heemskirk on the W. Coast of Tasmania, specimens of *Lode Tin*, gathered from a tract of country extending to North Bischoff, are exhibited with assays marked Nos. 1 to 15.

The North-east Coast and East Coast of Tasmania are represented by six specimens of *Lode Tin* collected from the Ringarooma and Gould's Country Districts, extending from Mt. Cameron to George's Bay, (Nos. 16 to 21); the same extent of country also being represented by 14 specimens of *Stream Tin* of varying character, (Nos. 22 to 35).

The samples of Zircon (36), and Sapphires (*), have been collected from the *Stream Tin*.

SECTION II.

Comprises Coal. The Sandfly Coal is shown by the analysis to be of very superior quality. There are three seams; the upper seam being 18 inches and the middle seam 28 inches thick. The third seam is reported to be 4 feet thick. The seams crop out at the side of the mountain. This Coal is not at present being worked. Next in value come in order Coal from Green Point, Port Cygnet, Gardener's Bay, York Plains, Jerusalem, and New Town.

It would appear that there is a coal basin covering an extent of country stretching from the sources of the Huon River across D'Entrecasteaux Channel, and cropping out at Adventure Bay, Bruni Island.

SECTION III.

Contains two very interesting specimens of Earthy Cobalt and Manganese, (Nos. 33 and 34); also of Bismuth and Copper Ores, as well as Antimony Ores containing Silver.

It is a disputed point whether the mineral marked No. 49 is not a new specimen which has never been named. The name attached to it is therefore marked with a note of interrogation.

SECTION IV.

The specimens of Gold in Quartz represent George's Bay, Fingal District, Denison Diggings, Waterhouse, Nine Mile Springs, and the great discoveries at Beaconsfield on the River Tamar. Gold has been discovered in many localities not represented in the Cabinet; but the discoveries being recent it has been found difficult to obtain specimens. Such localities are marked with a yellow cross on the map which accompanies the Cabinet.

SECTION V.

Consists chiefly of Iron Ores, Limestones (inclusive of Travertin), Slate, and the important specimen of Tasmanite.

All the Iron Ores at the present time found in Tasmania contain Chromium, which renders it difficult to obtain iron of commercial value from them.

No. 87, Tasmanite, is a most interesting specimen; having only been found in Tasmania. It received its name in England.

B.

THE MOUNT BISCHOFF TIN MINING COMPANY, REGISTERED, TASMANIA. See Exhibit No. 13.

WASHDIRT from the different Faces in full work at the present time.

NORTH SECTION, 80 ACRES.

Brown Face.

A.	Coarse wash, 25lbs. of Tin Ore to 50lbs. of dirt	50	per cent.
B.	Decomposed Porphyry, 28lbs. ditto	56	ditto.
C.	Porphyry Gravel, highly charged with Oxide of Iron, 21ozs. ditto	25	ditto.
D.	Ditto, 8ozs., ditto	1	ditto.
E.	Ditto, 3ozs., ditto	1	ditto.
F.	Ditto, 10ozs., ditto	1	ditto.
G.	Ditto, 12ozs., ditto	1	ditto.
H.	Ditto, 6ozs., ditto	1	ditto.
I.	Ditto, 14ozs., ditto	1	ditto.
J.	Ditto, 6ozs., ditto	1	ditto.

Slaughter-Yard Gully Face.

K.	White Porphyry wash, 15ozs. of Tin Ore to 50lbs. of dirt	17	per cent.
	Ditto, 15ozs., ditto	17	ditto.

SOUTH SECTION, 80 ACRES.

Lower Face, and that at the foot of the Self-acting.

M.	White Porphyry wash, 8ozs. of Tin Ore to 50lb. of Washdirt	1	per cent.
N.	Ditto, 6ozs., ditto	3	ditto.
O.	Ditto, 16ozs., ditto	2	ditto.
P.	Ditto, 14ozs., ditto	1	ditto.
Q.	Ditto, 12ozs., ditto	1	ditto.
R.	Ditto, 8ozs., ditto	1	ditto.

TIN ORE Dressed, and Sand in all stages before Dressing.

BATTERY FLOOR.

1. Fine Slime Tin, produce from Rotating Table.
2. Fine Tin, Fine Jigger, 1st Sieve.
3. Ditto, 2nd ditto.

MAIN DRESSING FLOOR.

4. Coarse Tin, Coarse Jigger, 1st Sieve.
5. Sand as sent from Sluices, and before classification.
6. Produce of first classifying Trommel.
7. Rough Ore from Coarse Jigger, crushing product.

- | | |
|-------------------|--|
| 8. Tin Ore, No. 1 | } Produce of 1st Sieve from Self-acting Jiggers. |
| 9. Ditto, No. 2 | |
| 10. Ditto, No. 3 | |
| 11. Ditto, No. 4 | |
| 12. Ditto, No. 5 | |
| 13. Sand, No. 1 | } Produce of 2nd Sieve from Self-acting Jiggers—Battery Product. |
| 14. Ditto, No. 2 | |
| 15. Ditto, No. 3 | |
| 16. Ditto, No. 4 | |
| 17. Ditto, No. 5 | |

- | | | |
|--------------------------------|--|--|
| 18. Sand before Jigging, No. 1 | } Produce of large
classifying Trommel,
ready to pass to
the Jiggers. | 23. Slime from Rotating Tables from same floor. |
| 19. Ditto, No. 2 | | } P.S.—All the Ore-dressing Machines are self-acting,
and effect a saving upon the old process. |
| 20. Ditto, No. 3 | | |
| 21. Ditto, No. 4 | | |
| 22. Ditto, No. 5 | | |

ROCK, Tin Ore, and various other Specimens.

No.	Pieces.	No.	Pieces.
1. Tin Ore Nugget, alluvial, 100lbs. weight ..	1	24. Porphyry and Slate Junction	3
2. Surface outcrop of so-called South Lode....	2	25. Red Porphyry	2
3. Tin Ore in Porphyry from White Face	7	26. White ditto with Iron Pyrites	2
4. Tin Ore in Crystal Quartz	1	27. Grey Quartz ditto	1
5. Lump of Ore 43lbs. weight, and two smaller	3	28. Felspathic Rock from Adit	1
6. Tin in Slate from White Face	2	29. Pudding-stone Conglomerate	2
7. Ditto in Conglomerate	1	30. Sandstone	3
8. Ditto in Chlorite	1	31. Slate	2
9. Large piece of Chlorite containing Tin Ore..	1	32. Kaolin	3
10. Tin, Chlorite, and Porphyry	1	33. Gossan and Tourmaline	1
11. Tin Ore from Slaughter-yard Gully, vein 4ft. thick	5	34. Ditto and Iron Pyrites.....	1
12. Conglomerate with Nuggets, Brown Face..	2	35. Gossan	4
13. Tin Nugget, 76lbs., Brown Face	1	36. Variegated Porphyry	2
14. Surface outcrop of so-called North Lode ..	3	37. Chlorite	1
15. Crystal Tin from Brown Face	2	38. Antimony, Lead Ore, with Fluorspar, &c... 3	3
16. Lode Tin from ditto	1	39. Chloritic Rock, with Fluorspar, Felspar, Pyrites, &c.....	3
17. Tin Crystals	14	40. Crystalline Quartz containing Zinc Blend and Iron Pyrites	1
18. Bag of small Tin Ore Nuggets.....	20	TOTAL.....	117
19. Argentiferous Galena and Carbonate of Iron	2	<hr style="width: 10%; margin: 0 auto;"/>	
20A. Oxide of Iron and Tin Ore	5	H. W. FERD. KAYSER, <i>Mining Manager.</i>	
20. White Porphyry	2	<i>Waratah, Tasmania,</i>	
21. Porphyry with Iron Pyrites	1	30th June, 1879.	
22. Porphyry and Chlorite	2		
23. Chlorite and Oxide of Iron	2		

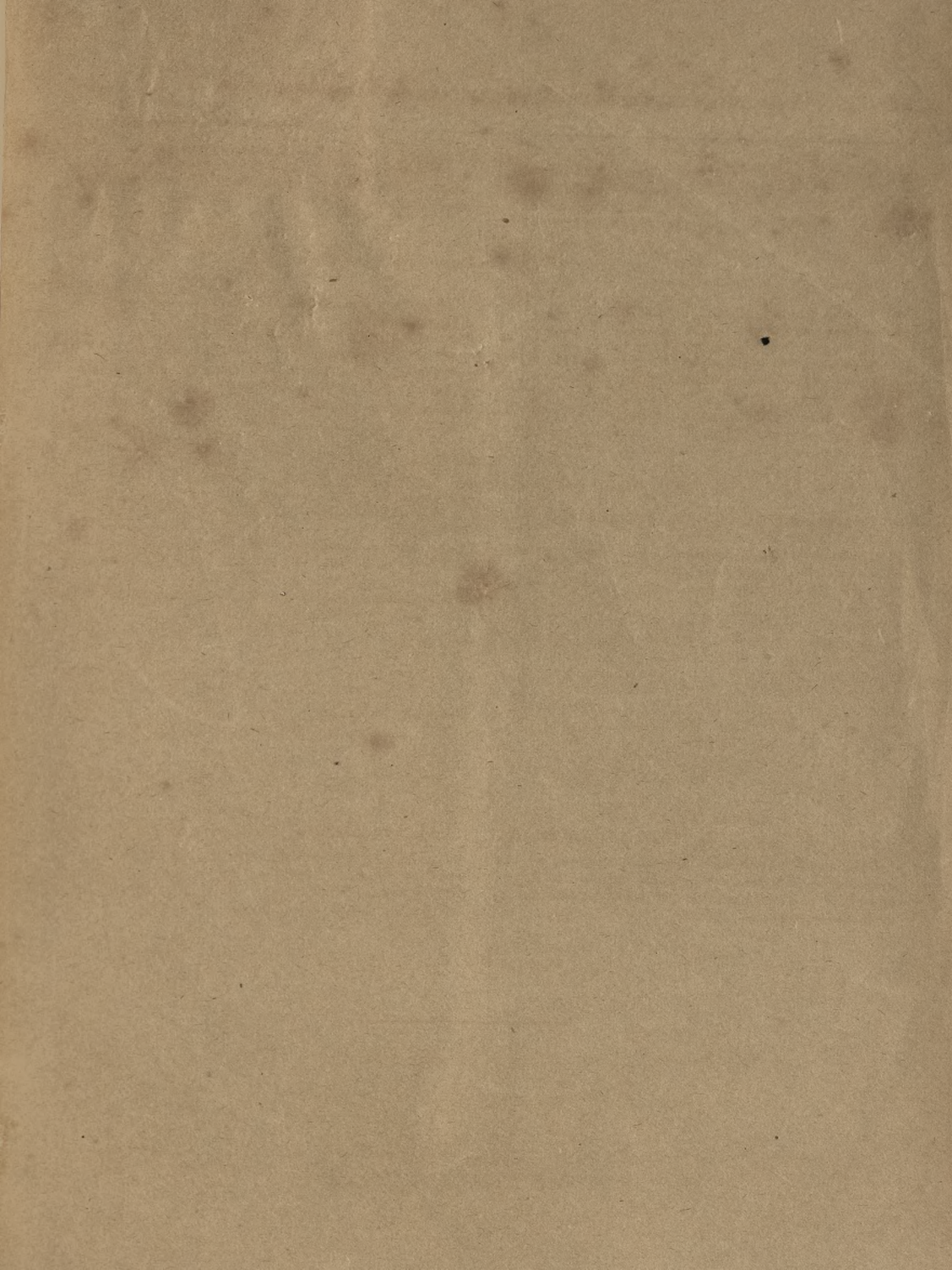
C.

DETAIL of No. 16, T. STEPHENS'S exhibit.

One Case containing typical specimens of the granites, porphyrites, greenstones, basalts, trachytes, and other plutonic and volcanic rocks of Tasmania, with some associated minerals.

One Case containing fossils illustrating all the known geological formations of Tasmania (except the carboniferous flora), and embracing tertiary, upper palæozoic, and lower palæozoic rocks.





BIBLIOTEKA KÓRNICKA

221663